



CORIN 311-MTR MULTI-TRANSITION RAMP

PRODUCT DATA SHEET

623 Chatsworth Hwy 225

Calhoun, GA 30701

706.403.3286

lamininindustries.com

RETROFIT RAMP PROFILES FOR LAMINATE, WOOD AND CERAMIC

Corin 311-MTR Multi-Transition Ramp is an edge protection that provides a smooth-sloped transition from one elevation to another, eliminating trip hazards. The retrofit ramps can be used for wood, laminate or ceramic flooring installations from (9mm) 5/16" to (15mm) 9/16" that are inclined to have heavy loads and wheeled cart traffic such as showrooms, exhibition booths, etc. The ridged surface profiles are countersunk drilled and the included screws will be visible after installation.

Product Finishes

Aluminum



AN
Natural

Anodized
Aluminum

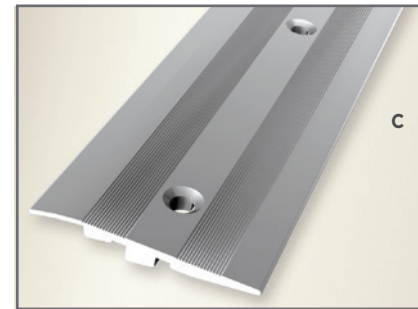
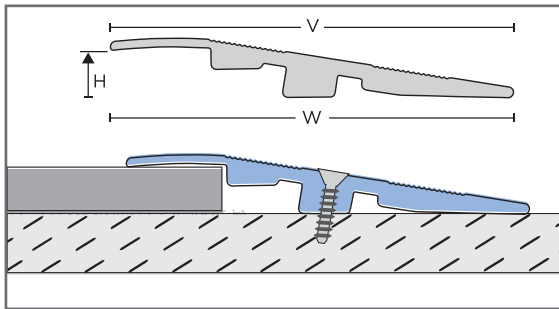


A1
Silver

Screws
Included



Torx
Screws



Transitions from (9mm) 5/16" to (15mm) 9/16" down to 0" to (3.175mm) 1/8"



Retrofit ramp profile for installation of laminate, wood or ceramic floor coverings:

- Transition to lower adjacent flooring
- Heavy duty transition from (9mm) 5/16" up to (15mm) 9/16" down to 0" to (3.175mm) 1/8"
- Installed using screws
- Ridged surface

Customized Options

- Profiles are available in custom lengths, colors and finishes upon request.
- All customized options require a minimum quantity with longer lead times to be expected.
- For more information on customized options contact your Laminin sales representative.