



CORIN 311-AET ALUMINUM L-SHAPED METAL EDGE TRIM

PRODUCT DATA SHEET

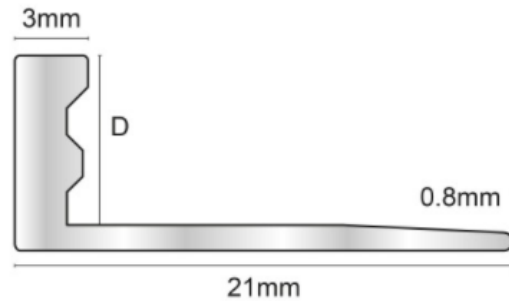
623 Chatsworth Hwy 225

Calhoun, GA 30701

706.403.3286

lamininindustries.com

Texture, Color-Coated, Aluminum L-Shaped Metal Edge Trim

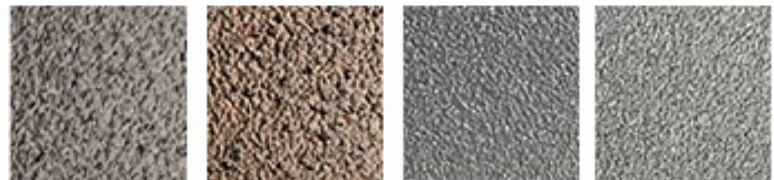


Heights: 3/8" and 1/2"

Colors: Mocha, Copper, Silver, Ash, Pebble, Eggshell, Sand,
and Natural **Lengths:** 8-foot Lengths

Installation Instructions:

1. Select Laminin Corin 311-AET according to tile thickness.
2. Trowel tile adhesive over the areathat forms the perimeter of the tiled covering.
3. Press the perimeter of the tile covering.
4. Trowel additional adhesive over the perforated anchoring leg to ensure full coverage and fill the cavity with tile adhesive.
5. Solidly embed the tiles so the tiled surface is flush with the top of the profile. The profile should not be higher than the tiled surface, but rather approx. 1mm lower.
6. Fill the joint completely with grout.



Mocha

Copper

Silver

Ash



Pebble

Eggshell

Sand

Natural