



CRETECLEAN PLUS™ MOP BUCKET

MAINTENANCE GUIDE

623 Chatsworth Hwy 225

Calhoun, GA 30701

706.403.3286

lamininindustries.com

DAILY CLEANING



1

Sweep and remove large debris and trash from the floor. Pay special attention to entrance doors and floor edges where dirt and dust are most likely to collect.



2

Fill the front compartment with 2 gallons of fresh, cold water and add one CreteClean Plus - Single Dose pac to the water. Do not add the cleaner before the water as this will result in unnecessary foaming.



3

Dip the scrub brush into the cleaning solution and scrub soiled and high traffic areas thoroughly. Pay special attention to entrances, furniture bases, and areas prone to spills and soil.



4

Mop the floor using a figure eight motion, flipping the mop head over frequently to maximize soil pick-up. One dip should clean a 10' x 10' area. In a standard-sized restaurant (2,000 ft²), the cleaning solution should be replacement at least once during the cleaning process.



5

Use a squeegee to pull any residual cleaning liquid away from the wall edges towards the center of the room. When finished, pick up the remaining liquid with a damp mop.



6

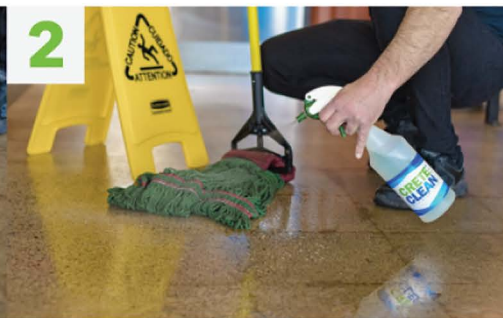
Thoroughly rinse the mop head with clean water and wring out. Allow to dry completely. Empty the mop bucket and rinse clean.

SPILLS



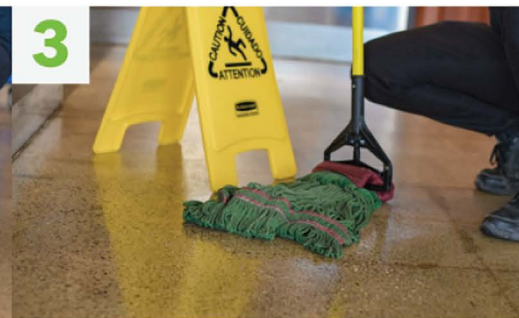
1

Do not allow spills to dwell on the floor. Display "Wet Floor" sign and clean immediately with a damp mop.



2

Spray the affected area generously with CreteClean Plus cleaning solution to lift any remaining contaminants out of the concrete pores.



3

Mop the area a second time, ensuring that the cleaning solution and contaminants have been removed completely. Allow the floor to dry.